



**The South African Shore Angling
Association have the honor to invite you
to participate in the**

**23rd World SHORE ANGLING CLUBS
Championship in Langebaan
South Africa
from
7th to 14th November 2015**

WELCOME TO LANGEBAAN

Although Langebaan is well known as a coastal resort, it is on the shores of a lagoon which flows from the sea. - one of South Africa's greatest natural wonders. The bright blue, sheltered stretch of water stretches south for 17 km from Saldanha Bay in the north, past Langebaan village to Geelbek at the southern end. It is 4 km wide in places. Langebaan village is in the heart of the West Coast region, 140 km from Cape Town. Langebaan is especially valued for its peaceful and beautiful surroundings. It is a favorite destination all the year round for visitors and water sports enthusiasts, who enjoy the fine angling, diving, swimming and sailing to be found here.

This picturesque town developed quickly from a quiet fishing village into a holidaymaker's paradise and today it is one of the most popular holiday resorts on the West Coast.

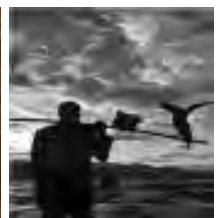
As the flowers from Postberg, through the West Coast National Park and all over the West Coast, form a tapestry of color and shape, so have the different people and nationalities formed a colorful tapestry. Churchhaven, on the opposite side of the lagoon, is a wonderful example of where the past, present and future have merged into an atmosphere of timelessness.

The town originated on a farm called De Stompe Hoek that was first called Geytenbergsfontein. Langebaan is one of the oldest towns in South Africa with a history dating back more than 400 years. It has an archaeological history of a few million years. Twelve kilometers east of the farm Elandsfontein, a fossilized skeleton was found that dates back to the Stone Age. This fossil deposit is considered to be one of the richest in the world.

Seal hunters from France frequented the area long before the time of Jan van Riebeeck. They used Schaapen Island as their head quarters and for storage of Seal skins and whale oil. This island which is close to the beach was called: "Isle à la Biche" at the time and the name was only changed back to the original about a century ago.

Schaapen Island was also used as a stop over to do repairs to ships. It was also used as a place of grazing for sheep that were then returned to Cape Town by the VOC.

Leentjies klip, where we find a caravan park today, got its name from a Mr. Lynch, who absconded from his ship in the area. "Lynch se klip" soon became known as "Leentiesklip", a name still used today.





Donkergat was used as a quarantine camp. In later years two fishing companies were established here: Donkergat in 1909 by John Bryde and Salamanderbaai in 1910 by Carl Ellefson.

The P.O.S.I., an oyster shell factory, was founded in 1918 where the Yacht Club is today. Remains of the original building forms part of the building where the bar is today.

Langebaan has a colorful history with many old historic buildings. "Oom Rijk Melck" (78) will gladly show you the places where they played as kids. His house, "Greystone", is one of the oldest buildings in Langebaan. As you enter the town, you will find a restaurant called "Tolhuis". This house got it's name because there was a gate in the road next to the house. The children would run to open it for visitors and received a penny for their trouble. As a result, the house earned it's name.

For more information:

www.langebaaninfo.co.za/

www.langebaanestate.co.za

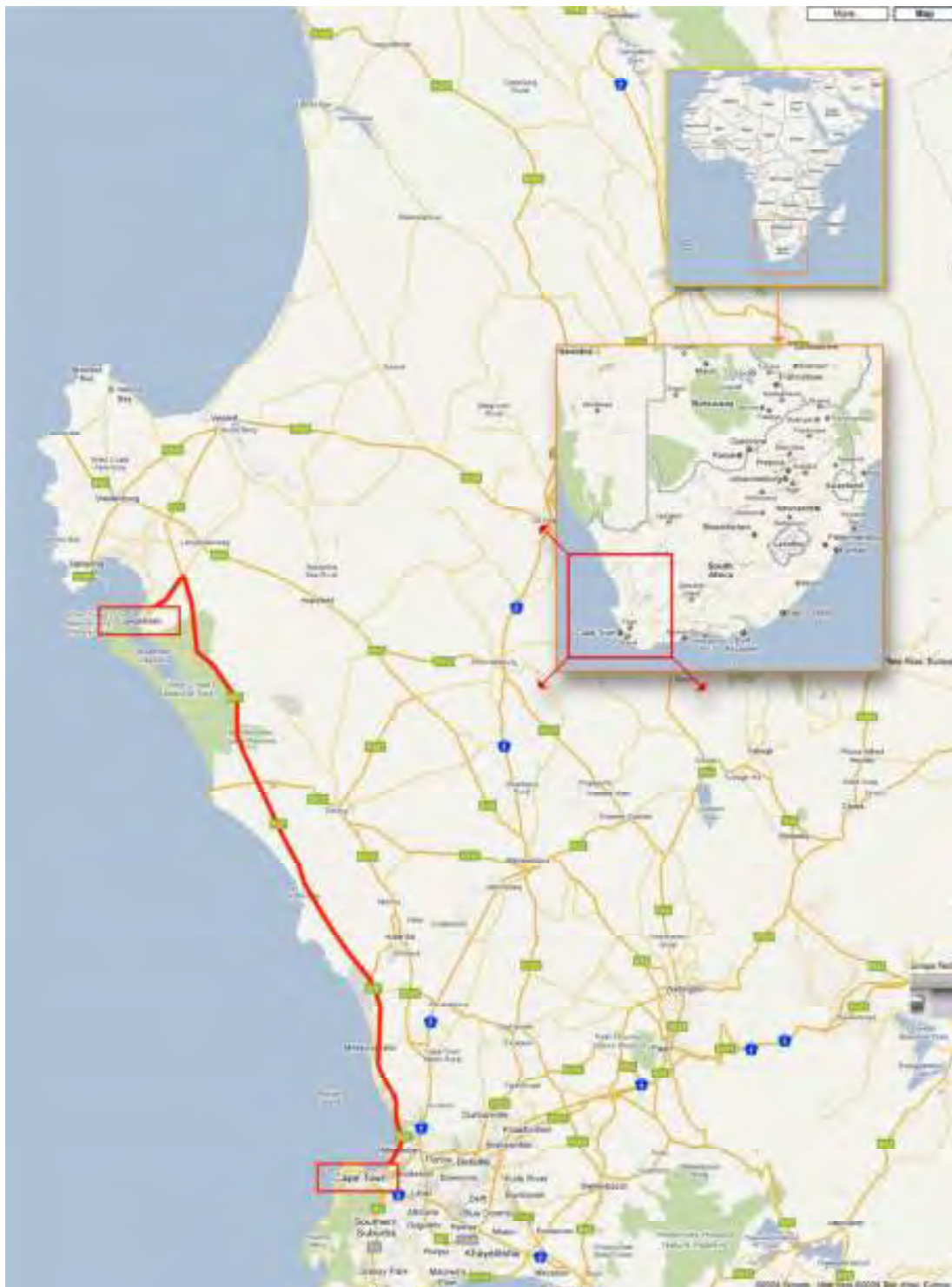
www.sasaa.co.za

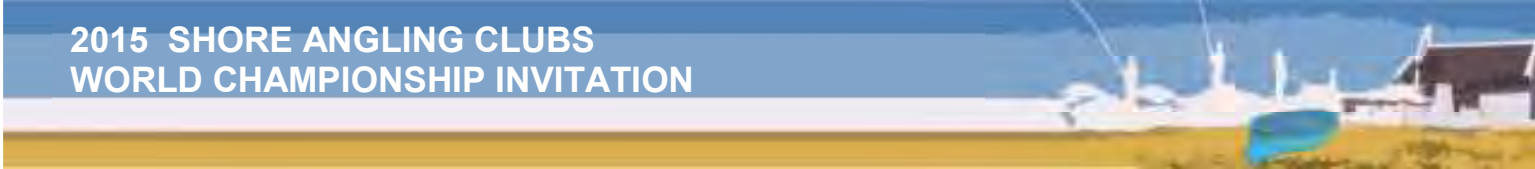
www.clubmykonos.co.za

www.southafrica.net



WHERE IS SOUTH AFRICA AND LANGEBAAN?





2015 SHORE ANGLING CLUBS WORLD CHAMPIONSHIP PROGRAMME

NOTE: Venue for dinners, breakfasts, lunches and all functions will be communicated well in advance.

Important Notice : All team participants, managers and captains must report to the Information Office on arrival.

Saturday, 7th November

18.00h - Final arrival of participants, accommodation at Langebaan Golf Estate.
www.langebaanestate.co.za
19.00h - 21.00h Dinner

Sunday, 8th November

07.00h - 08.45h Breakfast
09.00h Meeting between the Directorate and team captains
Drawing of fishing sectors for all days of competition
12.30h Joint press conference with team captains / managers
13.00h – 14.15h Lunch
14.30h Buses depart for Street parade. Preparations for the official opening ceremony
15.30h - 15.35h Fly over arial show by Silver Falcons, (if available)
15.35h - 15.55h Street parade

16.00h - OPENING CEREMONY

- ▶ National anthems and hoisting of national flags
- ▶ Addresses by Minister of Sport, Mayor of Langebaan, FIPS-M Official and President of South African Shore Angling Association
- ▶ Official opening

17.30h Mixing of all International waters
17.45h Buses depart for Dinner at Klipzaam. Visit
<https://www.facebook.com/klipzaamvenue.klipzaamvenue>
18.00h Teams and Guests ushered to tables
18.00h - 18.30h Dinner starter / hor d'ourves
19.00h - 19.05h Dance school performance
19.05h - 21.30h Dinner
21.45h Buses depart for accommodation



2015 SHORE ANGLING CLUBS WORLD CHAMPIONSHIP INVITATION



PRACTICE DAY - Monday, 9th November

05.45h -	Buses depart for breakfast Competitors must load fishing equipment on bus
06.00h - 07.00h	Breakfast. (Note), Lunch packs will be delivered to fishing venue
07.30h	Roll call Buses depart to fishing venue
08.15h	Buses arrive at fishing venue Bait issue
08.30h	Competitors proceed to sectors
10.00h	Start of OFFICIAL TRAINING
14.00h	End of Training. Buses return to accommodation
15.00h	Conversion of fish measurement to weight Captains meeting if required
18.30h	Announcement of results of official training to team captains
18.40h	Buses depart for dinner every 20 minutes
19.00h - 21.00h	Dinner
21.00h	Last bus departs to accommodation

DAY 1 - Tuesday, 10th November

05.45h -	Buses depart for breakfast Competitors must load fishing equipment on bus
06.00h - 07.00h	Breakfast. (Note), Lunch packs will be delivered to fishing venue
07.30h	Roll call Buses depart to fishing venue
08.15h	Buses arrive at fishing venue Bait issue
08.30h	Competitors proceed to sectors
10.00h	Start of Competition Day 1
14.00h	End of Match. Buses return to accommodation
15.00h	Conversion of fish measurement to weight Captains meeting if required
18.30h	Announcement of Day 1 results.
18.40h	Buses depart for dinner every 20 minutes
19.00h - 21.00h	Dinner
21.00h	Last bus departs to accommodation

DAY 2 - Wednesday, 11th November

05.45h -	Buses depart for breakfast Competitors must load fishing equipment on bus
06.00h - 07.00h	Breakfast. (Note), Lunch packs will be delivered to fishing venue
07.30h	Roll call Buses depart to fishing venue
08.15h	Buses arrive at fishing venue Bait issue
08.30h	Competitors proceed to sectors
10.00h	Start of Competition Day 2

2015 SHORE ANGLING CLUBS WORLD CHAMPIONSHIP INVITATION



15.00h	Conversion of fish measurement to weight
	Captains meeting if required
18.30h	Announcement of Day 2 results.
18.40h	Buses depart for dinner every 20 minutes
19.00h - 21.00h	Dinner
21.00h	Last bus departs to accommodation

DAY 3 - Thursday, 12th November

05.45h -	Buses depart for breakfast
	Competitors must load fishing equipment on bus
06.00h - 07.00h	Breakfast. (Note), Lunch packs will be delivered to fishing venue
07.30h	Roll call
	Buses depart to fishing venue
08.15h	Buses arrive at fishing venue
	Bait issue
08.30h	Competitors proceed to sectors
10.00h	Start of Competition Day 3
14.00h	End of Match. Buses return to accommodation
15.00h	Conversion of fish measurement to weight
	Captains meeting if required
18.30h	Announcement of Day 3 results.
18.40h	Buses depart for dinner every 20 minutes
19.00h - 21.00h	Dinner
21.00h	Last bus departs to accommodation

DAY 4 - Friday 13th November

05.45h -	Buses depart for breakfast
	Competitors must load fishing equipment on bus
06.00h - 07.00h	Breakfast. (Note), Lunch packs will be delivered to fishing venue
07.30h	Roll call
	Buses depart to fishing venue
08.15h	Buses arrive at fishing venue
	Bait issue
08.30h	Competitors proceed to sectors
10.00h	Start of Competition Day 4
14.00h	End of Match. Buses return to accommodation
15.00h	Conversion of fish measurement to weight
18.40h -	Buses depart for GALA DINNER
19.00h -	Teams and Guests ushered to tables
19.00h - 21.00h	Dinner - Proclamation of winners and presentation of awards

2015 SHORE ANGLING CLUBS WORLD CHAMPIONSHIP INVITATION

Saturday 14th November

07.30h - Breakfast
Departure of participants

You will be informed well in advance if this proposed programme changes



LANGEBAAN COUNTRY ESTATE RULES

Here are a few 'housekeeping' matters we would like to bring to your attention;

1. A Lodge or Suite must be vacated (keys handed in at Reception) before 10h00 on the day of departure.
2. Parking is at own risk.
3. All bar and restaurant facilities at the Clubhouse are cash or credit card only.

To help you relax and enjoy your time at Langebaan Country Estate and for future reference we have listed some of the facilities available to you. We hope that you will enjoy your stay with us. If we can do anything to make your stay more enjoyable, or should you need anything, please do not hesitate to contact the team at Langebaan Country Estate.

General Estate Rules:

1. Guests and visitors are not permitted to bring any pets onto the estate and are required to sign the relevant entry document stating that they will abide by the House Rules, Regulations, any Disclaimers and the Constitution. No vehicles shall enter or leave at any point except at the entrance gates, and shall only be driven on the brick paved estate roads, at a speed not in excess of 30km per hour and at a speed of 15km per hour in Ellefsen.
2. The Estate is an environmentally sensitive area and no person may enter natural fynbos areas, or do anything that detrimentally affects the flora and fauna, or any of the amenities. No unauthorised persons may enter any storage dams.
3. Only members, guests and visitors who have paid and signed in to play golf are permitted on the golf course, and play starts and ends at the Clubhouse.
4. Building construction sites are at all times out of bounds to unauthorised persons, and construction staff must be transported to and from site.
5. No bait permitted on Estate

House Rules:

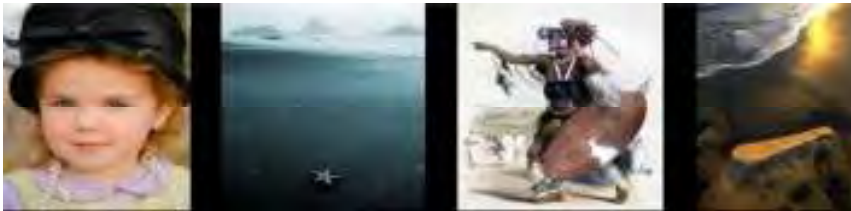
1. The Lodge or Golf Suite is to be used for accommodation only for the number of persons specified in your reservation.
2. It is not permitted to hang washing or towels over balconies or out of windows, or to drape it over garden furniture.
3. Please keep fellow residents in mind regarding the volume of the radio and TV; do not create excessive or unnecessary noise.



4. No smoking is allowed in the Lodge or Golf Suite, and we would appreciate your thoughtful disposal of cigarette litter outside the accommodation.
5. Please do not litter.
6. Please park cars in the allocated garage or parking bay per unit. There are extra parking bays available for extra cars. Do not park on the plants or grass.
7. Please adhere to the speed limits on the estate.
8. No pets are allowed.
9. Limited DSTV channels available in addition to local stations.
10. Please refrain from walking on the golf course, use the road provided to the clubhouse. This is for your own safety.

Pool Area Rules:

1. Children are not allowed in the pool area unless accompanied by an adult.
2. No alcohol or glass bottles are allowed in the pool area.
3. Do not walk through the plants. Walk on the paved areas at all times.



GENERAL INFORMATION

A. ORGANISATION

The Organizer of the Championships is the South African Shore Angling Association.

Tournament Director and contact person:

Frans Claassen, address: PO Box 1320, Gansbaai, 7220, South Africa
Tel: 0027 28 384 1333; Fax: 0027 28 384 1333; Mobile: 0027 83 546 7474

E-mail: sasaasec@telkomsa.net

Web: www.sasaa.co.za

B. APPROACHES TO THE ORGANIZING PLACE LANGEBAAN

1. By Road:

Drive on R27 road from Cape Town towards Veldrif.
Turn left onto the Oosterwal road into Langebaan.
Co-ordinates are: 33°6'14.96"S: 18°1'56.88"E



Website to visit: www.streetmaps.co.za

2. By Air:

LIST OF THE MAJOR AIRLINES THAT SERVE CAPE TOWN INTERNATIONAL AIRPORT.

Air Mauritius	Lufthansa
Air Namibia	Malaysia Airlines
British Airways	SAA
Delta Airways	Singapore Airlines
Kenya Airways	Virgin Atlantic
KLM	Emirates

Cape Town Airport is situated on the Eastern outskirts of the city and 140km's from Langebaan.

From the USA the only direct flights to South Africa are with South African Airways and Delta Airlines. They fly from New York (JFK) and Atlanta to Johannesburg and Cape Town. Alternatively, there is the choice to fly via an European capital, with one of the European airlines shown in the list above. From Europe there are a wide variety of flights, most of them direct and non stop to either Johannesburg or Cape Town. The above list also shows a number of airlines that offer direct flights from Australia and the Far East.

Airfares, Booking and Tickets...

There are a myriad of booking agents to be found, each one offering you the lowest air fares and best packages. Our experience has been that often the lowest fare was to be found direct from the airline themselves.

General Flight times to South Africa...

On direct international air routes flights from Europe are generally overnight. From the USA there is usually one stop over, but some flights offer multiple stopovers. Below is a fair idea of the duration of flights from a number of major international gateways to South Africa with the relevant flight times.

2015 SHORE ANGLING CLUBS WORLD CHAMPIONSHIP INVITATION



LONDON 11 hr 00 min

AMSTERDAM 11 hr 00 min

FRANKFURT 10 hr 30 min

ZURICH 10 hr 15 min

LISSABON 09 hr 30 min

SAU PAULO 11 hr 00 min

RIO DE JANEIRO 09 hr 15 min

ATLANTA (1 stop) 17 hr 45 min

NAIROBI 04 hr 20 min

HONG KONG 13 hr 15 min

PARIS 10 hr 30 min

ATHENS 09 hr 30 min

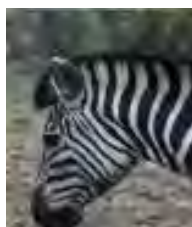
TEL AVIV 09 hr 10 min

DUBAI 08 hr 20 min

NEW YORK 15 hr 20 min

MIAMI 16 hr 00 min

3. By sea & Railway: Not recommended
4. Transport / Shuttle from Cape Town Airport to Langebaan will be arranged by the organizer.

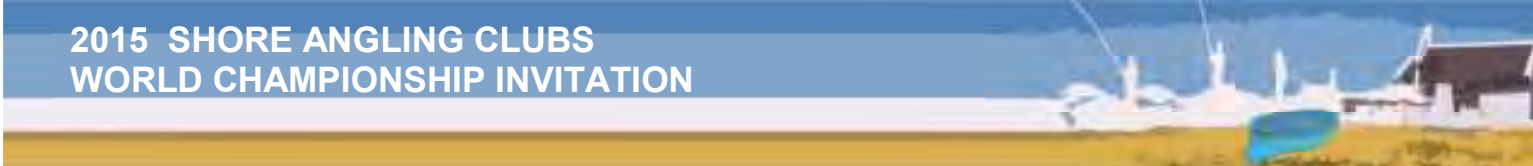


C. INSURANCE

The Organizer undertakes to insure ALL the participants in the Championships against accidents and death, with the relevant state insurance agency, at its own expense.

D. MEDICAL CERTIFICATES AND MEDICAL STAFF

1. Each national organization is accountable for the data entered / supplied for their team and shall provide that all the members of the team produce a medical certificate as a proof of their fitness to take part in the competition
2. A medical certificate for the team will be accepted provided it is stamped by a competent doctor and is written in one of the official languages of C.I.P.S.
3. The Organizer will have medical competent staff available for the duration of the competition
4. Should a national organization fail to comply with 1 and/or 2 above, the Organizer will commission a medical doctor to issue the medical / fitness certificates, at the expense of the competitor(s) or their national organization.



E. ANTI-DOPING CONTROL

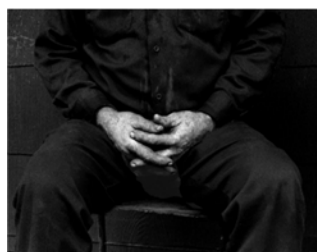
All the participants / competitors partaking in the championships implicitly include the acceptance of ALL the sports anti-doping rules of WADA.

F. VISAS

Visas are required for visitors. Contact your nearest South African consular representative.

G. STATE FLAG AND ANTHEM

National organizations are responsible for supplying the Organizer with at least one (preferably two) flag of their country, of the prescribed size, as well as a CD with their national anthem in MP3 format.



H. MEDALS AND OTHER RECOGNITIONS

The winners will be awarded medals - gold silver and bronze - by FIPS-M, while the Organiser will offer cups and other commemorative awards.

I. MEANS OF PAYMENT (CURRENCY)

The currency in use is ZAR, (Zuid Afrika Rand, South African Rand) but payments could be made in other valid convertible currencies (through exchange in banks or exchange offices for Euro), or by American Express, Master, Diners or Visa cards.

J. PARTICIPATION

1. PARTICIPATING FEE PER TEAM

▶ 5 Competitors	x 650 €	3 250-00 €
▶ 1 Manager	x 575 €	575-00 €
TEAM COST 5 Anglers and 1 Manager		3 825-00 €
▶ 1 reserve / captain	x 575 €	575-00 €
▶ Individual competitor		650-00 €



INCLUDED IN THE PARTICIPATION FEE

- a. hotel / house accommodation in double rooms, full board (breakfast, lunch, dinner) starting with dinner on Saturday, 7th November, concluding with breakfast on Saturday, 14th November
- b. transport to / from the competition sites
- c. cultural / entertainment programme
- d. gala dinner / closing ceremony (banquet)
- e. baits for competition and official practice
- f. FIPS/M starting fee and CIPS organizing fees

Note: Cost for additional bait for own practice days will be available at:

Pilchards	2.50 € /kg
Chokka / Squid / Calamari	13.50 € /kg
Mullet	6.50 € /10 each

2. CAPTAIN / NATIONAL OFFICIAL / TEAM LEADER

Individual fee per member 575-00 €
The fee per individual member includes all listed from a,b,c & d above.

3. OTHER PERSONS

(Family, friends, etc.) 575-00 €

The fee per individual family / friend includes :

The fee per individual family / friends includes all listed from a,b,c & d above

4. CONDITIONS OF CANCELATION

- ▶ Up to 60 days of departure: no expenses will be retained within the limit where partial cancellation not exceeds 10 % of numbers. Beyond that, 15 % of expenses per cancelled competitor.
- ▶ Between 60 and 30 days: 25 % of the difference of the total amount file induced by partial cancellation.
- ▶ Between 29 and 8 days: 50 % of the difference of the total amount file induced by partial cancellation.
- ▶ Between 7 days and the departure date: 100 % of the difference of the total amount file induced by partial cancellation.

SASAA BANK DETAILS:

SOUTH AFRICAN SHORE ANGLING ASSOCIATION
FIRST NATIONAL BANK
NEWTON PARK
BRANCH CODE: 261050
ACCOUNT No. 534 100 361 57
FNB SWIFT No. (FIRNZAJJ)

(FIRST NATIONAL BANK, Newton Park, PO Box 7028, 293 Cape Road Newton Park, Port Elizabeth, 6055, Eastern Cape Province, South Africa)



5. BAITS

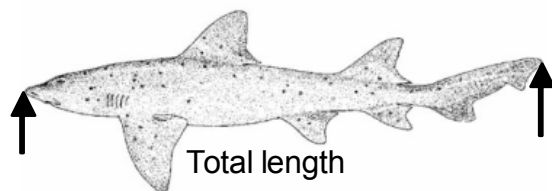
The following **3** baits will be supplied per day:

▶ Mullet	10 number
▶ Sardine	1 kg
▶ Chokka / Squid / Calamari	500 gram

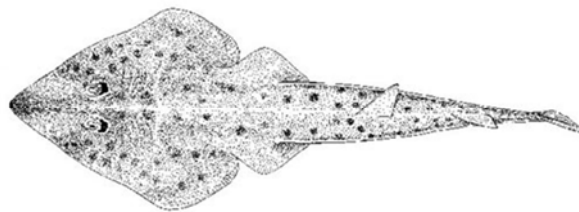
6. FISH SPECIE

Many species of fish are caught in the area but the predominant species are:

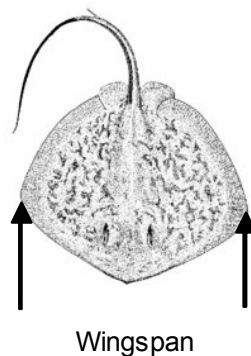
Smooth Hound



Guitar Fish

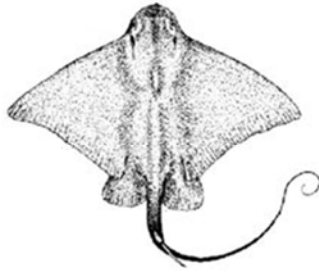


Blue Ray

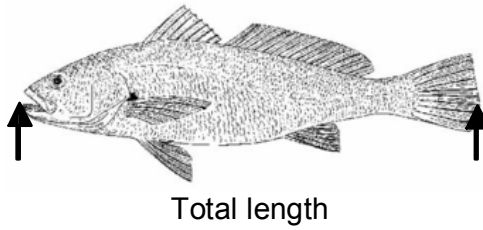




Eagle Ray



Cob



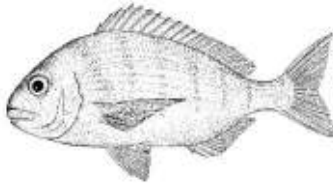
St Josephs



Spear Nose Skates



White Stump Nose



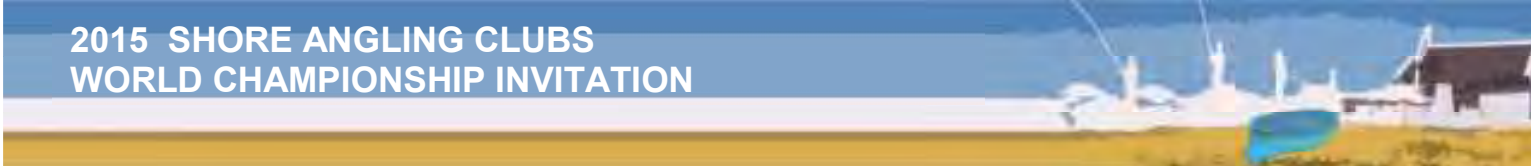
Blacktail





Dogfish (Striped)	Poroderma africanum
Gully (Spotted)	Triakis megalopterus
Hound (Smooth)	Mustelus mustelus
Blueray	Dasyatis chrysonota
Duckbill ray	Pteromylaeus bovinus
Eagle ray	Myliobatis aquila
Electric (marbled)	Torpedo sinuspersici
Guitarfish (Lesser)	Rhinobatos annulatus
Spearnose	Raja alba
Stingray (Short-tail)	Dasyatis brevicaudata
Blacktail	Diplodus sargus capensis
Hottentot	Pachymetopon blochii
Kob (Dusky)	Argyrosomus sp.
Leervis	Lichia amia
Mullet (Striped)	Liza tricuspidens
Steenbras (Wescoast)	Lithognathus aureti
Stumpnose (White)	Rhabdosargus globiceps

- 6.1 Minimum size of **15cm** as per FIPS/M rules
- 6.2 Shad and Galjoen are out of season and will not score points.
- 6.3 Only stewards / marshals will be permitted to remove hooks from fish with poisonous spikes.
- 6.4 The fish will be measured by a steward for the classification. The length and species of the fish will be recorded on the competitors match card, a weight for length conversion system will be used by the organisation. A copy of the conversion table will be supplied to each captain at the first meeting.



7. FISHING TACKLE SHOP

There are three (3) fully equipped tackle shops in Langebaan or within 20 km.
The Organizers will ensure the shops have appropriate tackle in stock.

SPECIAL ARRANGMENTS

Should a team wish to arrive earlier for training/practice or to stay after the official competition the Organizer will provide at the following rates:

daily FULL board, per person sharing per day, (Transport to & from practice fishing venue included)	65-00 €
daily FULL board, per person not sharing per day	80-00 €
daily tax and insurance, per person	2-50 €

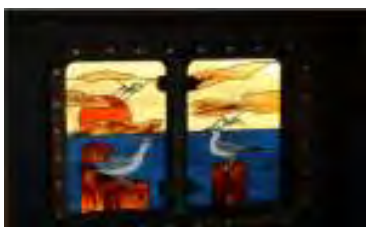
8. BRING A BOTTEL,(500ml) OF SEA WATER FROM YOUR NATION

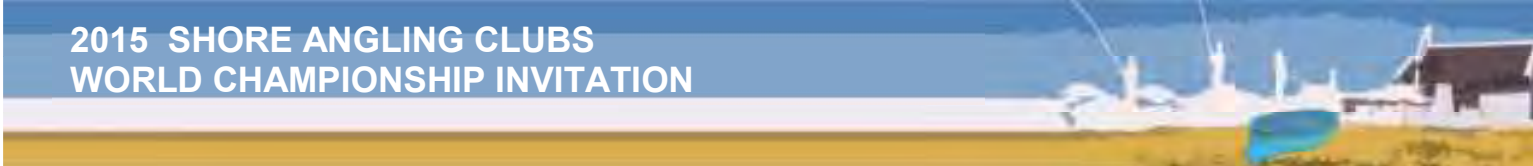


9. PAYMENTS

Each federation shall make payments

- Within **8 (eight) days** following the submission of FINAL APPLICATION, in line with the payment instructions supplied.





10. EXPRESSION OF INTEREST

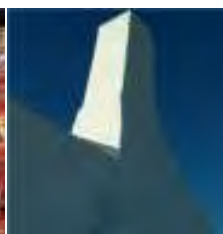
Nations who are considering participating in this Championship are requested to complete this form and e-mail or fax to the number or address below:

You are under no obligation. Please complete.

EXPRESSION OF INTEREST

NATION	CLUB NAME	NAME	SURNAME	E-MAIL	PHONE No,
SOUTH AFRICA	DROSDY	FRANS	CLAASSEN	sasaasec@telkomsa.net	+27 83 546 7474

FAX to: 0027 28 384 1333
E-mail to: sasaasec@telkomsa.net



FICHA DE INSCRIÇÃO / FICHE D'INSCRIPTION REGISTRATION FORM

Devolver antes de / Return Before **15/07/2015**

Country / Pays / Nation:

Club Name:

	Prénom /Name	Nom / Surname	Cost / Coût (€)
1			650 €
2			650 €
3			650 €
4			650 €
5			650 €
R			650 €

Capitaine d'Équipe et Délégué / Team Manager, Captain, Representative

Position	Prénom /Name	Nom / Surname	Cost / Coût (€)
Total Cost / Coût Total	€	

FAX to: 0027 28 384 1333
E-mail to: sasaasec@telkomsa.net

Total payments must be made before **15 July 2015** to SOUTH AFRICAN SHORE ANGLING ASSOCIATION, with a copy of the bank transfer by e-mail to Frans Claassen at sasaasec@telkomsa.net. SOUTH AFRICAN SHORE ANGLING ASSOCIATION, FIRST NATIONAL BANK, NEWTON PARK, BRANCH CODE: 261050, ACCOUNT No. 534 100 361 57, FNB SWIFT No. **(FIRNZAJJ)** (FIRST NATIONAL BANK, Newton Park, PO Box 7028, 293 Cape Road Newton Park, Port Elizabeth, 6055, Eastern Cape Province, South Africa)

Signed / Siané: / / 2015

FICHE D'INSCRIPTION

REGISTRATION FORM - ACOMPANHANTES

Return Before /Remettre avant **15/07/2015**

Country / Pays / Nation :

Club name:

	Prénom /Name	Nom / Surname	Cost / Coût (€)
1			
2			
3			
4			
5			
6			
7			
8			
9			
10			
11			
		Total Cost / Coût Total€

FAX to: 0027 28 384 1333

E-mail to: sasaasec@telkomsa.net

Total payments must be made before **15 July 2015** to SOUTH AFRICAN SHORE ANGLING ASSOCIATION, with a copy of the bank transfer by e-mail to Frans Claassen at sasaasec@telkomsa.net. SOUTH AFRICAN SHORE ANGLING ASSOCIATION, FIRST NATIONAL BANK , NEWTON PARK, BRANCH CODE: 261050, ACCOUNT No. 534 100 361 57, FNB SWIFT No. **(FIRNZAJJ)** (FIRST NATIONAL BANK, Newton Park, PO Box 7028, 293 Cape Road Newton Park, Port Elizabeth, 6055, Eastern Cape Province, South Africa)



TEAM : _____

TRAVEL PLAN

NAMES	ARRIVE : CAPE TOWN					DEPART FROM CAPE TOWN		
	FLIGHT No	DATE	TIME	DO YOU NEED TRANSPORT TO LANGEBAAN		FLIGHT No	DATE	TIME
				YES	NO			
1								
2								
3								
4								
5								
6								
7								
8								
9								
10								
11								
12								
13								
14								
15								

FAX to: 0027 28 384 1333
E-mail to: sasaasec@telkomsa.net



TOURNAMENT ANGLING ON THE WEST COAST

Introduction

Tournament angling on the West Coast is different, VERY different! It is simply like no other area in South Africa. The water is shallow, VERY shallow, usually less than a meter deep. REALLY flat, there is simply no swell.

Because of the cold Benguela current the water is normally very cold except in the protected bays such as St Helena Bay and Saldanha Bay where the sun warms the water, as it is so shallow in the case of St Helena bay and because of the Langebaan lagoon in the case of the Saldanha Bay area. The result is that all the angling is done in these two bays. In both these bays the water can be as warm as 24° C and so most of the fish are concentrated there.

Blue Water Bay to Saldanha Bay

This area is exceptionally shallow and normally crystal clear, however don't let that put you off as the Lesser Guitar fish and bull rays still feed even in the clear water. You can actually stalk them and cast a bait at them.

Bergriver Mouth to Dwarskersbos and Varkenvlei

The road to Dwarskersbos runs parallel to the coast, making it very accessible by any vehicle. The first entry point is at *the beacon*. From this point it is possible to follow the coast all the way to the *swartbossie*, a distance of two to three kilometers. Because of the track being a 4x4 track it is fished less often than the rest of the area, but often produces good fish, especially bull rays.

The most popular area fished is from the swartbossie to the *Lapa*. This area is heavily fished by local anglers, fishing for cob and galjoen, [every year a few giant cob are caught by anglers fishing for galjoen with white mussel] For the competitive angler this can be the most productive area and has been known to produce great numbers of fish.

The Lapa the fish are generally taken on a long cast and because of this it usually fishes better on a low tide. Again this area has quite a lot of reef and it is important to know where they are as again the fish seem to swim along these rocky areas.

From the *Lapa to Dwarskersbos* there are numerous reefs, which open on the low tide. This whole area [+/- 3kms] is a good area for all the flat fish, especially blue rays.

The water along this area is normally brown and flat and because of this the predominant bait is sardine and mullet

Langebaan

This is the area that produces the most Smooth hound fish. It also produces Lesser Guitar fish [most of the Lesser Guitar fish are the round nose specie which grow slightly larger than the standard Lesser Guitar fish]. Bull Rays and the odd Kob is also caught



In Langebaan first important spot is the *Spit in Langebaan*, which is a prime spot for catching smooth hounds. It fishes best from two hours before low tide till two hours after low tide, as this is when the current is slack.

Because of the fish being targeted, squid is a very important bait in this area. The smooth hounds here seem to prefer squid above any other bait. Mullet are the second most important bait, especially a slightly larger mullet so that a reasonable bait can be made of the head. Sardine is important for Lesser Guitar Fish bait. The bait allocation for this area will be Squid, mullet and sardine.

APPROPRIATE TACKLE

Because of the size of the fish being targeted an angler will need two sets of rods and reels. When fishing for Smooth hounds an appropriate rod would be 4m and a 6 to 8 ounce tip. When fishing for the smaller flat fish a 3.5m and a 4 to 6 ounce tip would be better. The problem of two rods can be overcome by having one rod with two different tips.

The reels that are mostly used are the Shimano or Daiwa 20 or 30. It would be appropriate to have a reel filled with a good quality nylon with a diameter of 0.50mm and one with 0.45 mm. for shock leaders a range from 0.65 to 1.00mm would be suggested.

For terminal tackle sinkers should range from simple teardrop sinkers 75gr to 175gr. When there is current in the Langebaan area the breakaway with wires in them will be needed. Here only heavy sinkers would be needed 150 to 175grs. The hook range would be from 3/0 to 6/0 for the lighter fishing, while 7^º to 10^º will be needed for the heavier fishing.

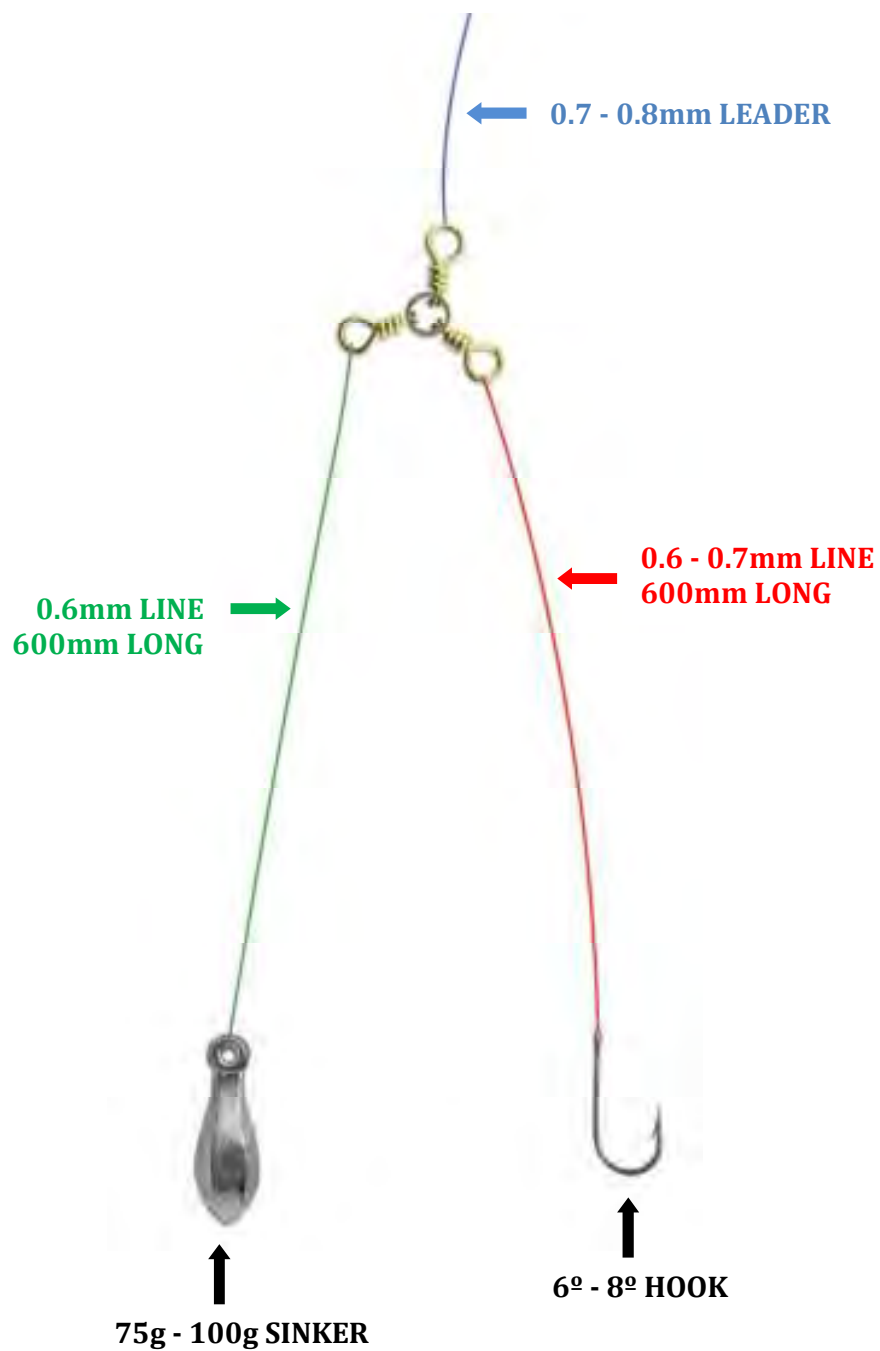
It would not be advisable to use more than two hooks at any one time as the fish are of such a size that they may break each other off even when fishing with two hooks this happens.



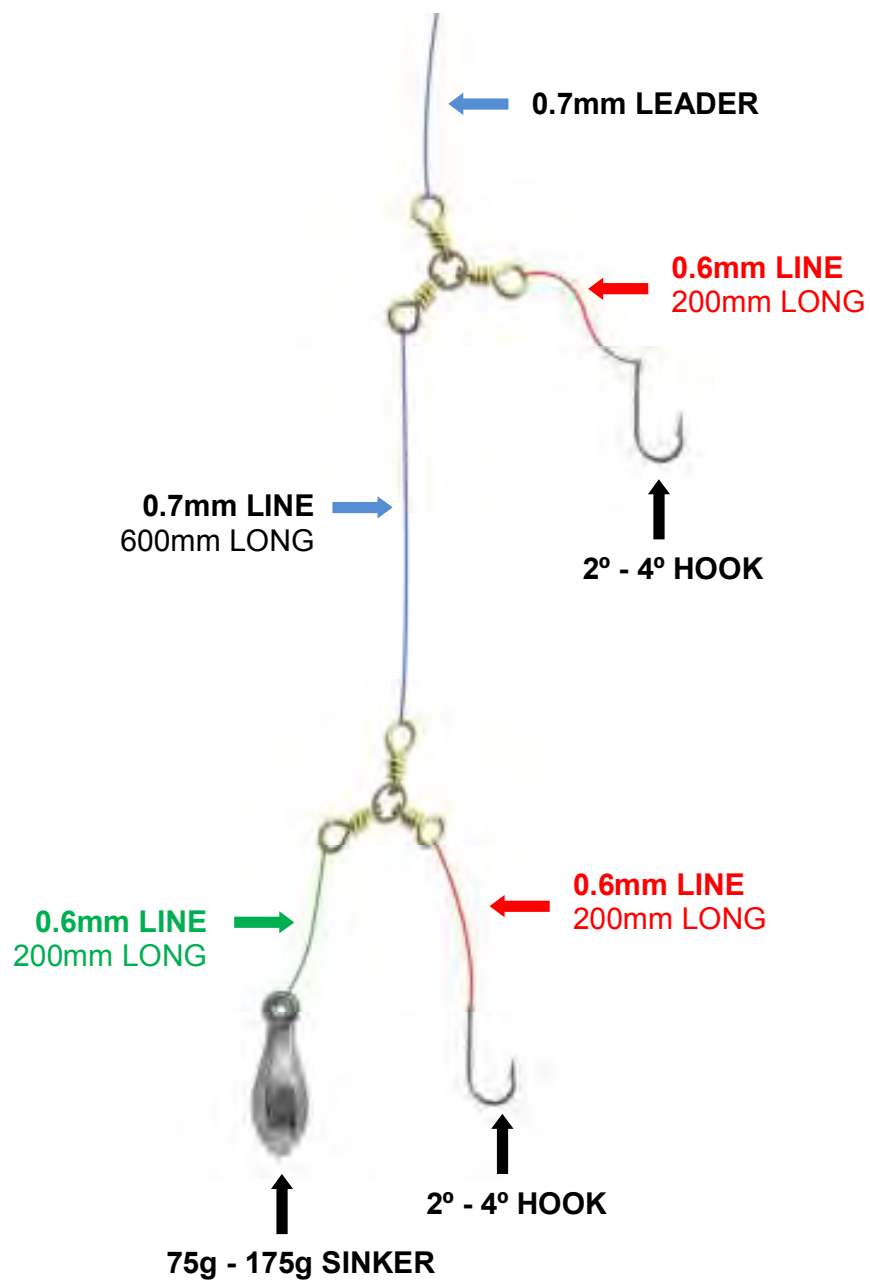


TRADITIONAL SETTING / TRACE USED

TRACE 1



TRACE 2



TRACE 3



CONSERVATION

South African angling is **VERY** conservation conscious and will **insist** that all fish be returned to the water as soon as possible with as little trauma as possible. We also allow no gaffing of fish as all the fish here can easily be landed without being gaffed. The use of circle hooks is highly recommended but if a hook is swallowed by a fish the trace must immediately be cut. We also insist that no rays be turned on their backs when removing hooks as this can cause them permanent damage.

WARNING

Some of our fish have spikes and can cause ugly wounds. The most dangerous are the barbel as their spikes have venom which can cause extreme pain. The blue rays and the duckbill rays have a spike on their tail which can also cause ugly wounds. The St Josephs have a spike on their backs which should be handled with caution.

In **Conclusion** the West Coast looks forward to welcoming all competitive anglers to our waters, may you all enjoy your stay and come back again as this is probably the last frontier of angling in South Africa.

BAITS



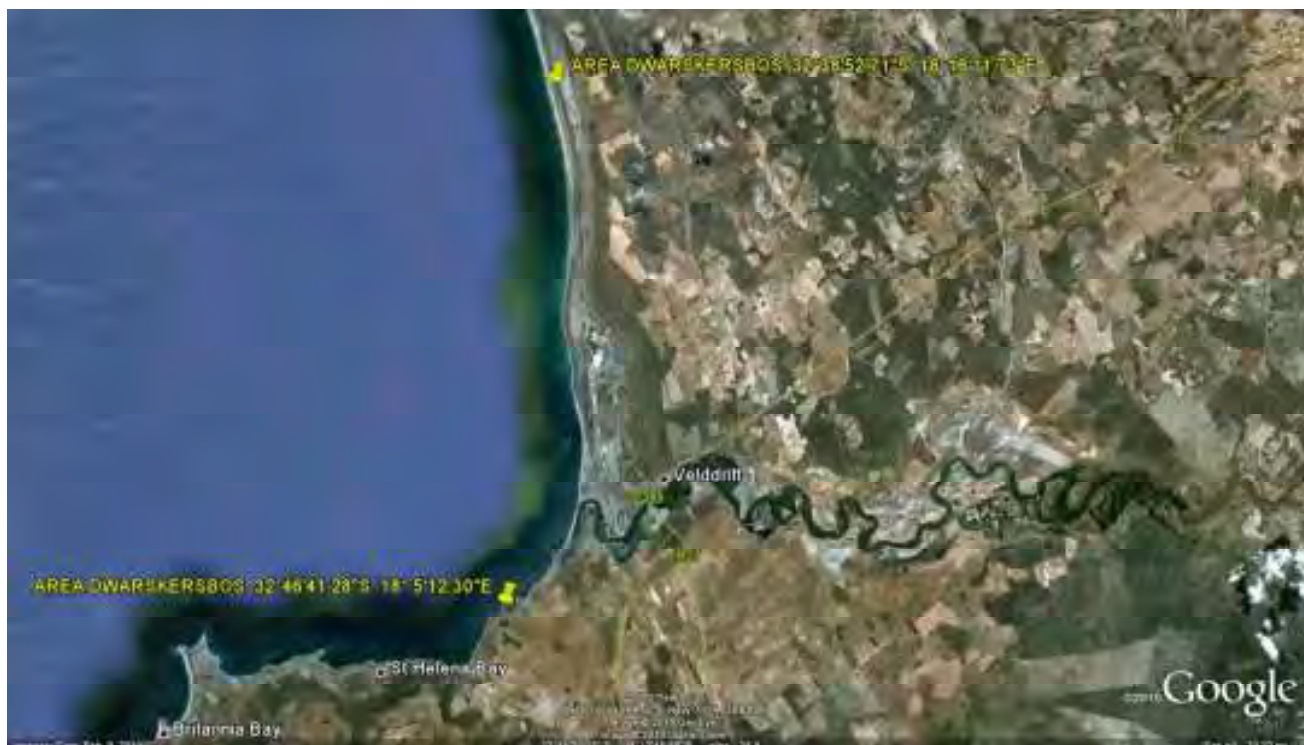
FISHING AREAS

Langebaan to Blue Water Bay to Saldanha Bay



2015 SHORE ANGLING CLUBS WORLD CHAMPIONSHIP INVITATION

Dwarskersbos to Lapa to Bergriver mouth



*We wish to thank **DARLING CELLARS** as the wine sponsor for the tournament*



DARLING CELLARS

33° 26' 21.00" S 18° 31' 20.00" E

Compiled by : Pierre du Preez